

CARTELA DE 05/2024

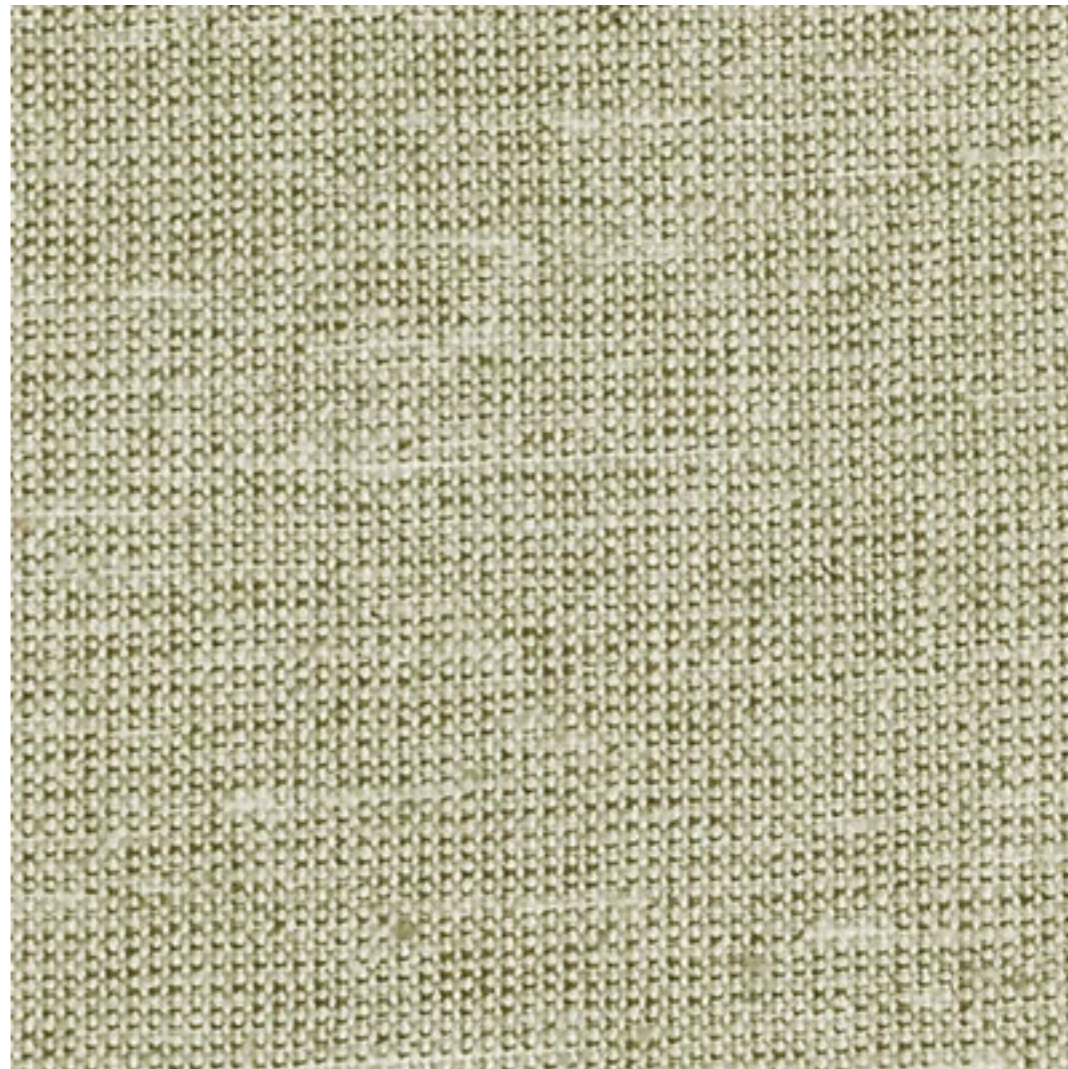
# Tecidos

*ozki*



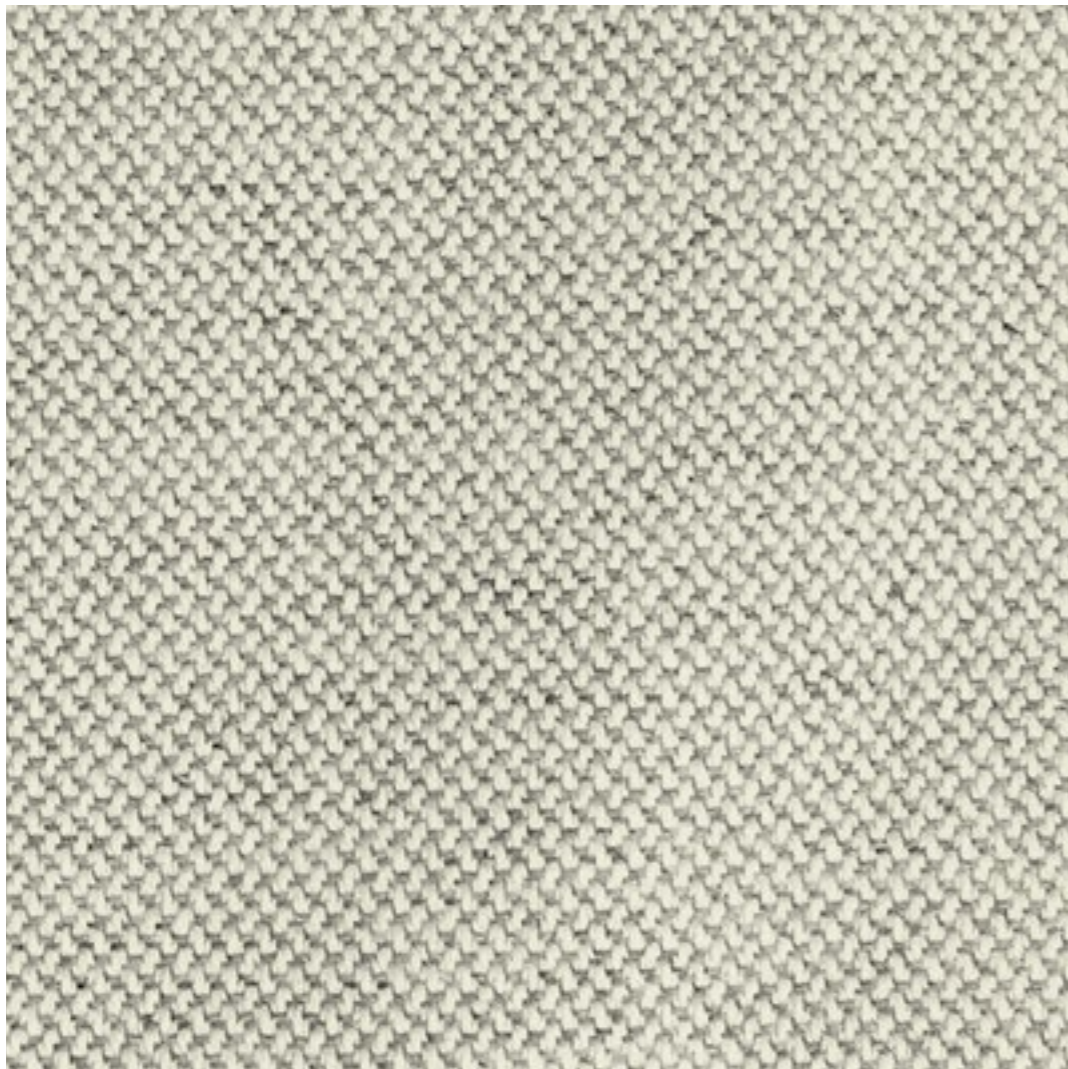
TEC 405 C

42% Poliéster 29% Algodão 29% Linho



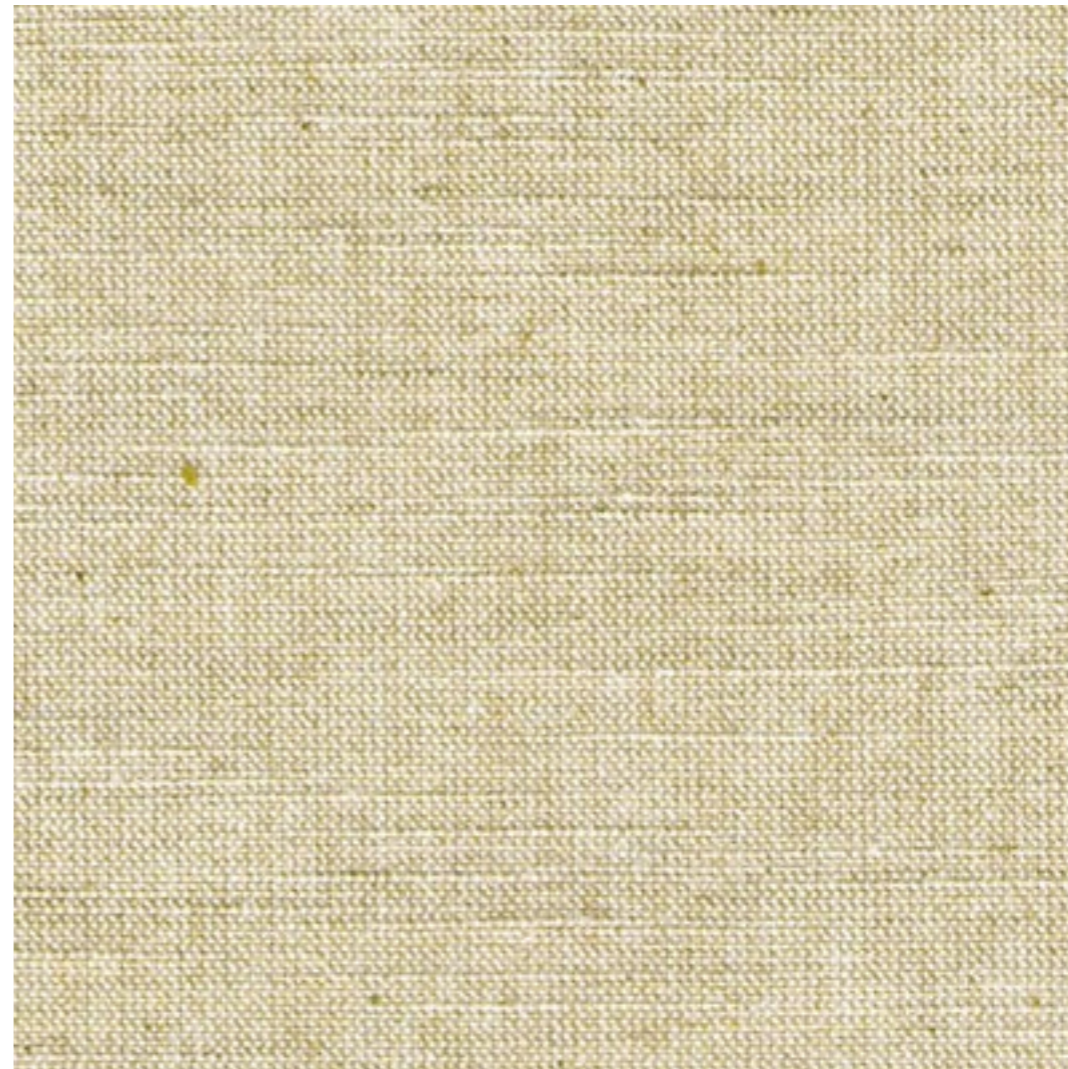
TEC 413 C

44% Algodão 56% Poliéster



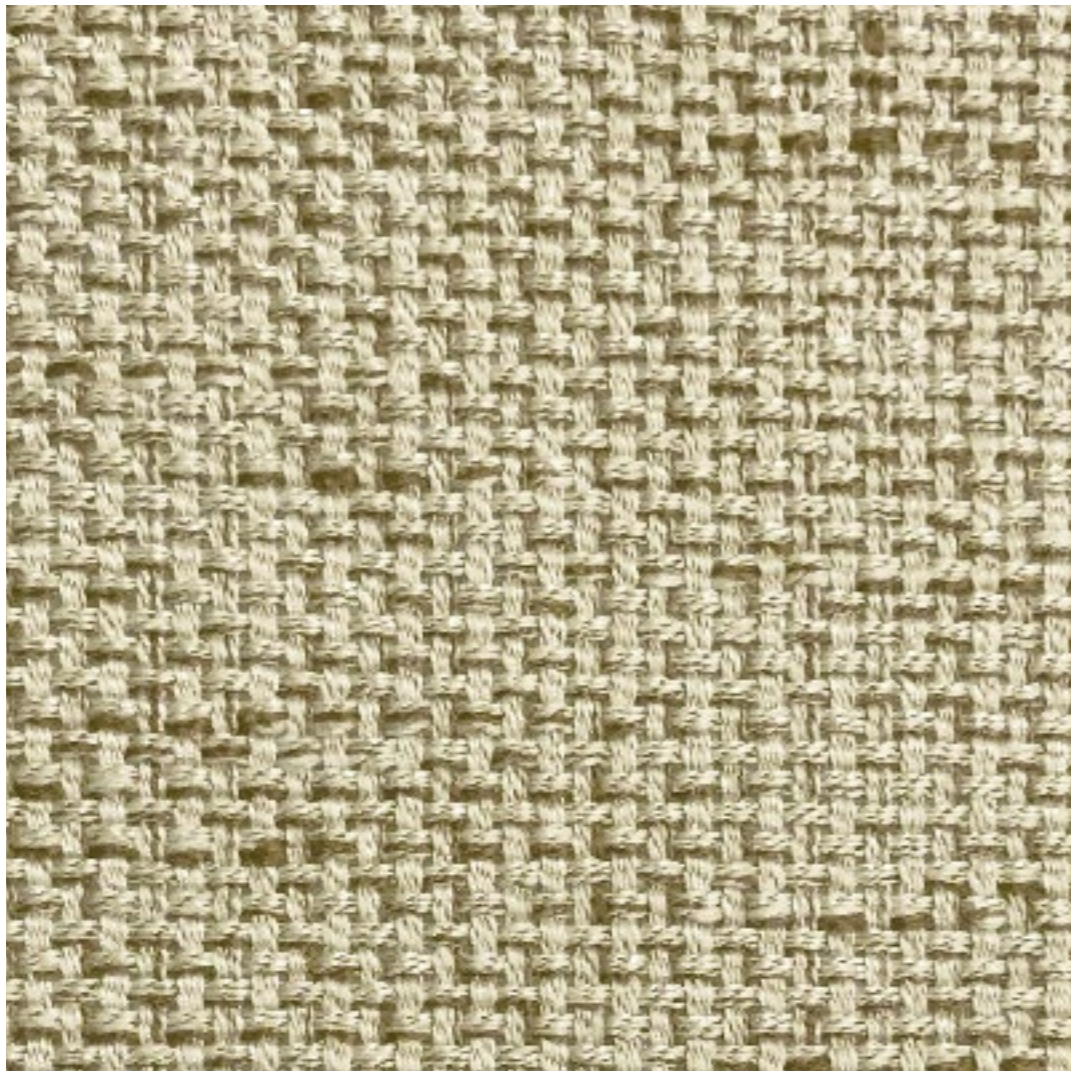
TEC 415 C

93% Algodão 07% Poliéster

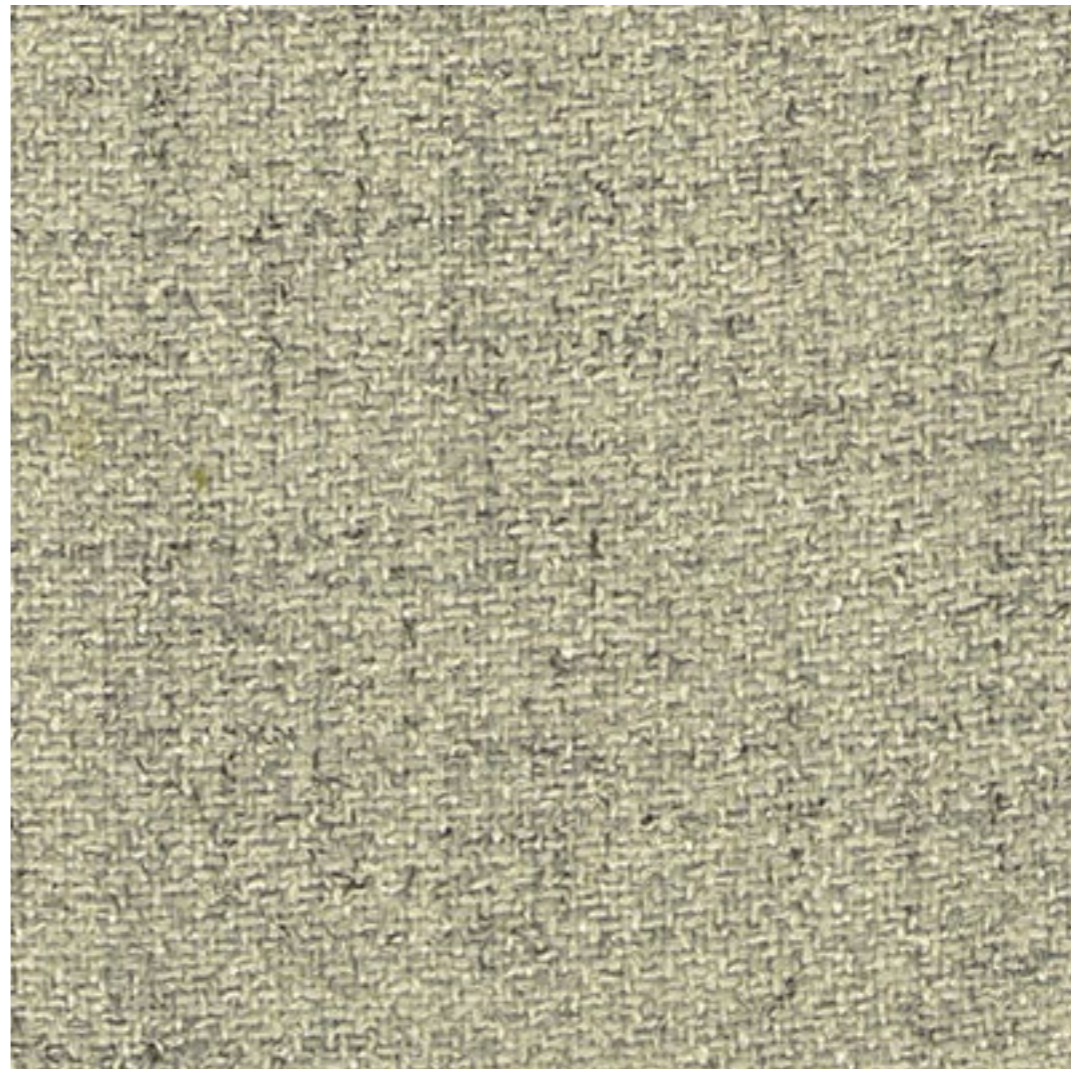


TEC 429 C

100% Algodão Eco Sustentável



TEC 430 C  
100% Poliéster



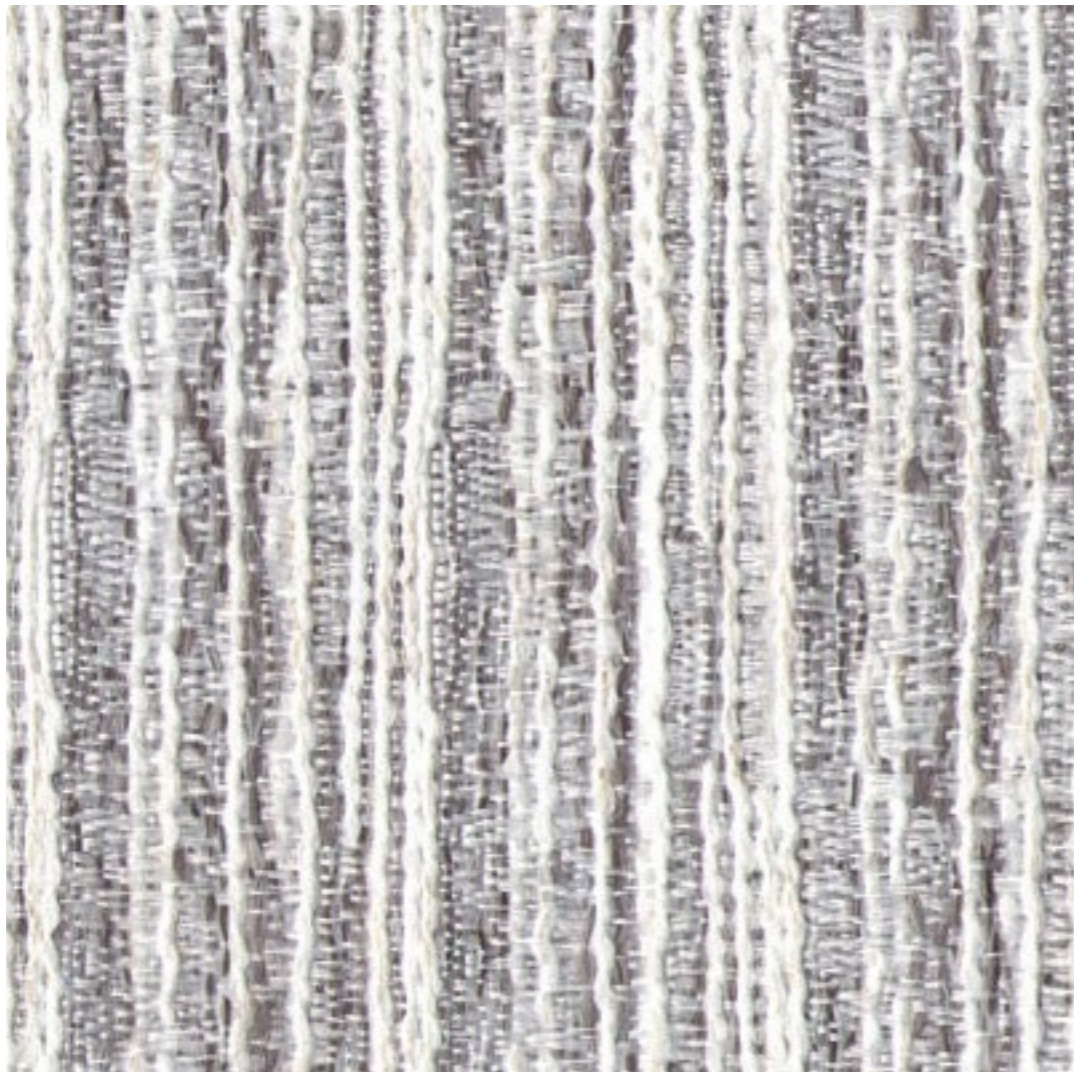
TEC 433 C  
100% Poliéster



TEC 434 C  
100% Poliéster



TEC 442 C  
51% Linho 49% Poliéster



TEC 448 C

21% Polipropileno 7% Linho 72% Poliéster



TEC 449 C

100 % Poliéster



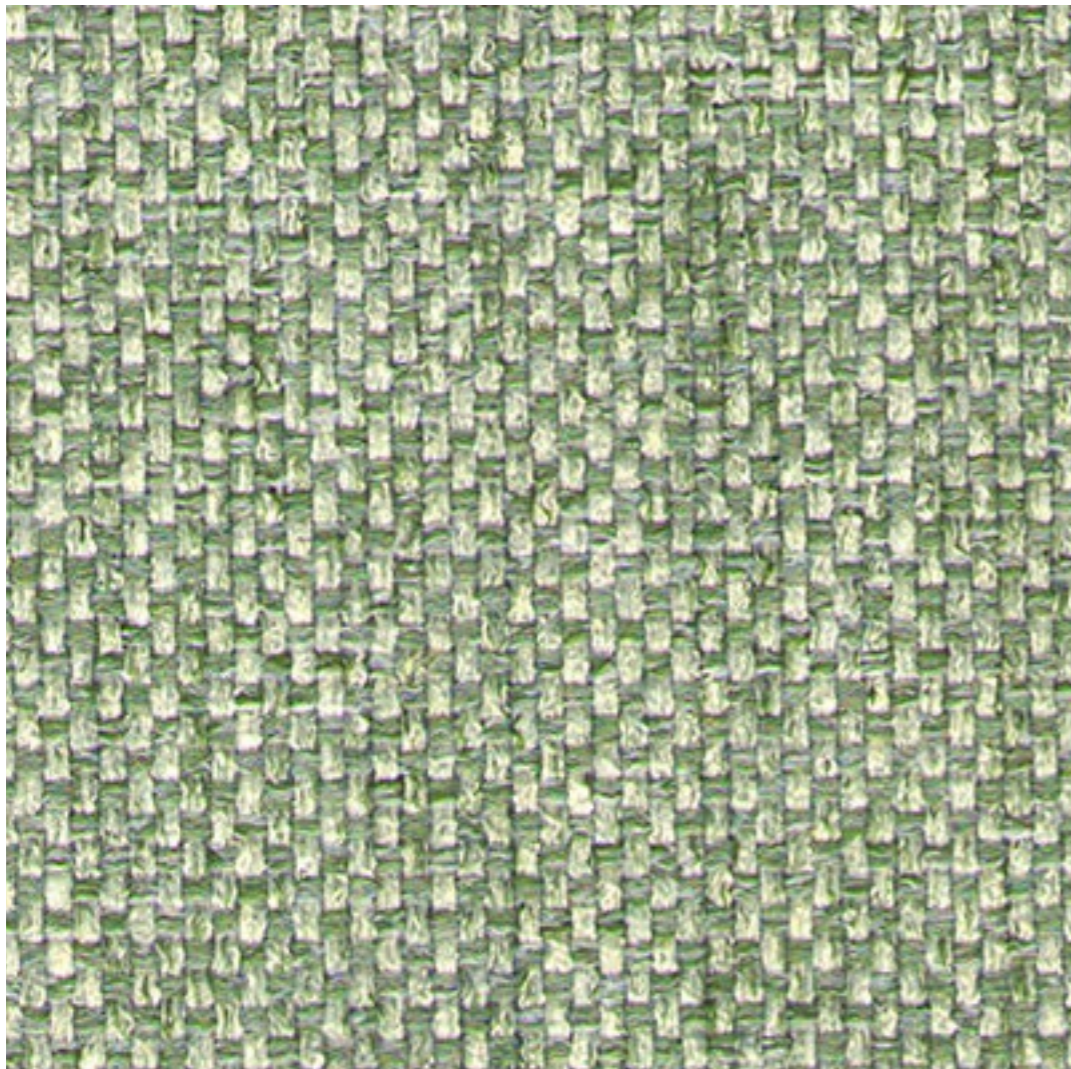
TEC 452 C

50% Algodão 50% Poliéster

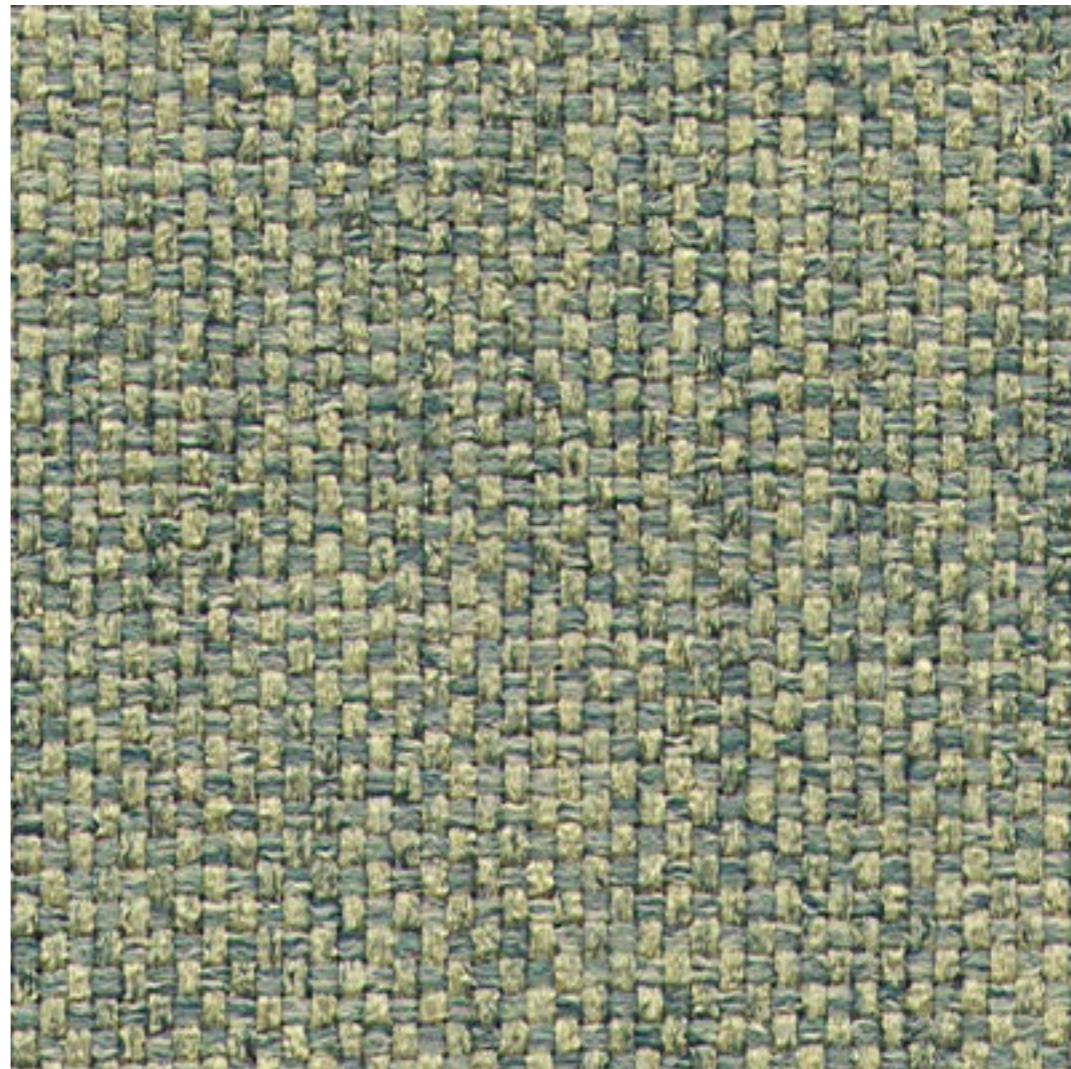


TEC 453 C

50% Algodão 50% Poliéster



TEC 454 C  
100% Poliéster



TEC 455 C  
100% Poliéster





TEC 456 C  
100% Poliéster



TEC 457 C  
100% Poliéster



TEC 458 C  
100% Poliéster



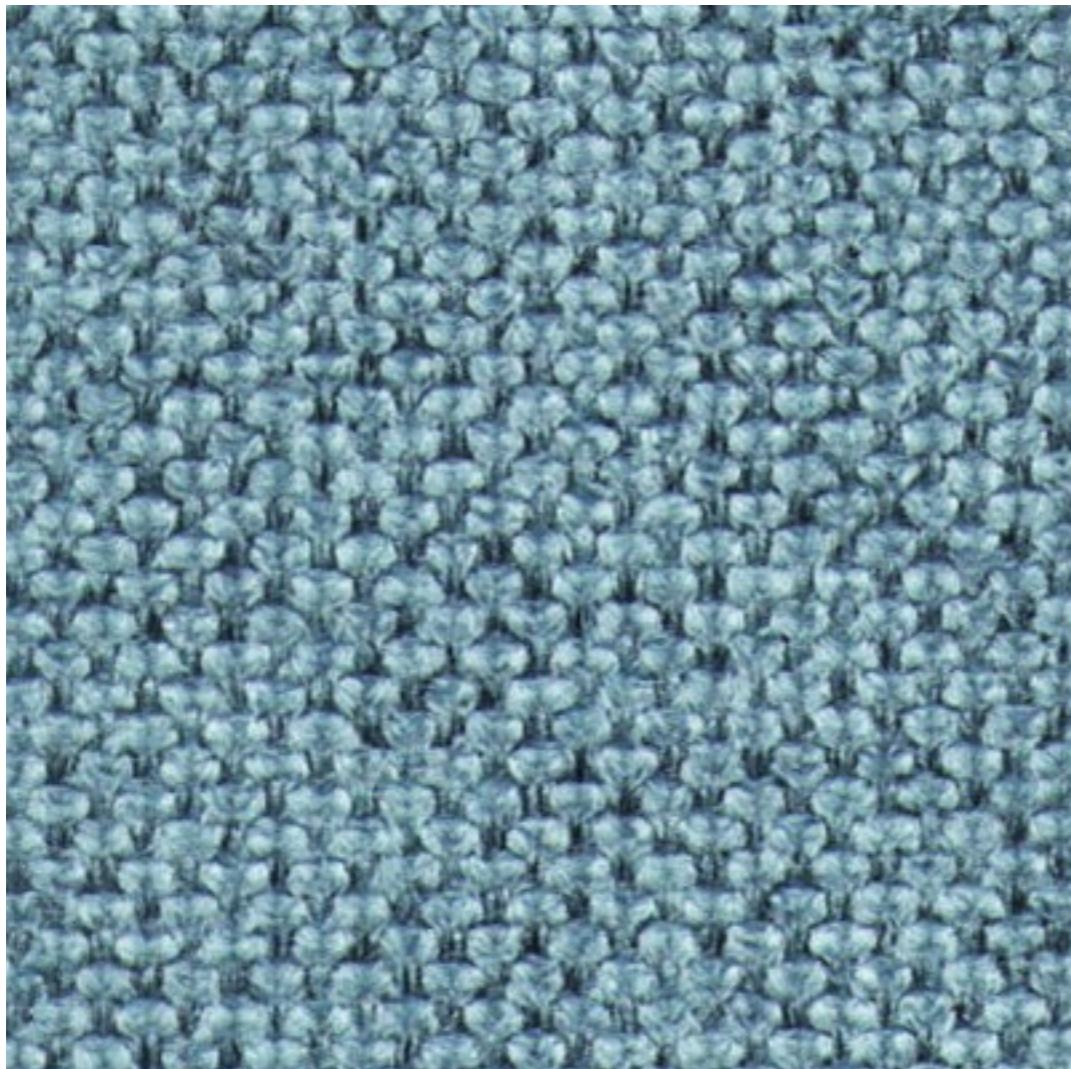
TEC 460 C  
74% Algodão 26% Poliéster - Eco Sustentável



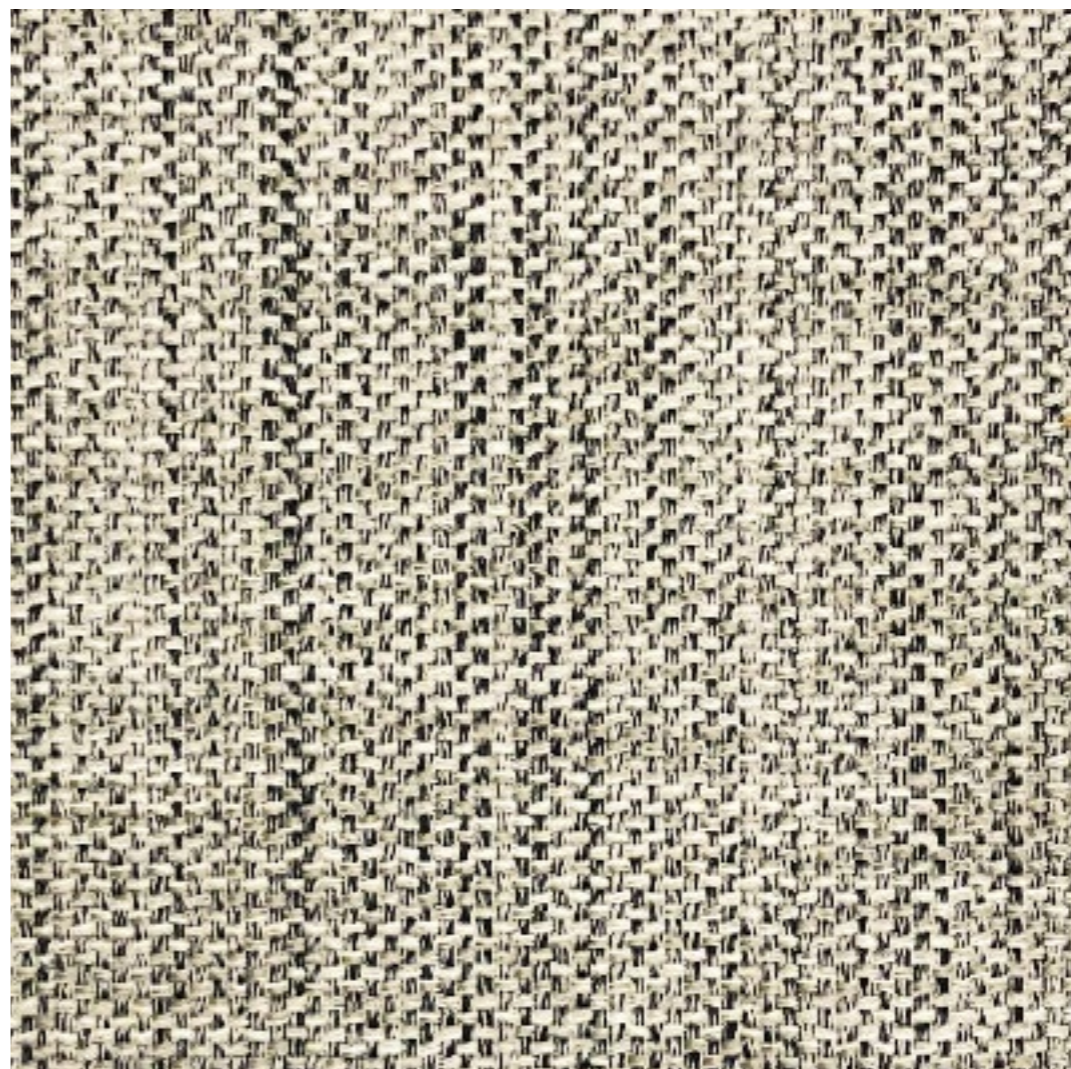
TEC 461 C  
100% Poliéster



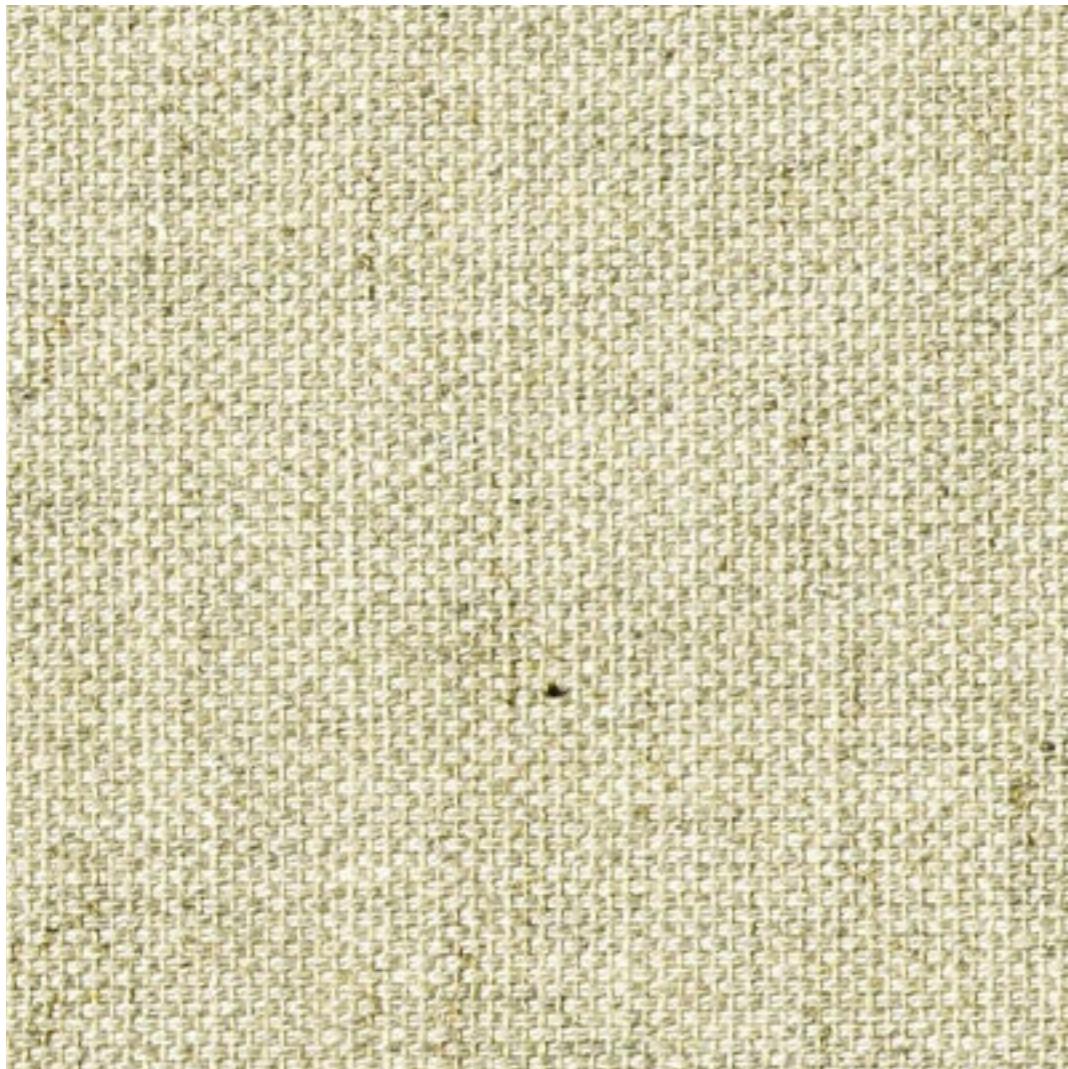
TEC 462 C  
100% Poliéster



TEC 463 C  
100% Poliéster

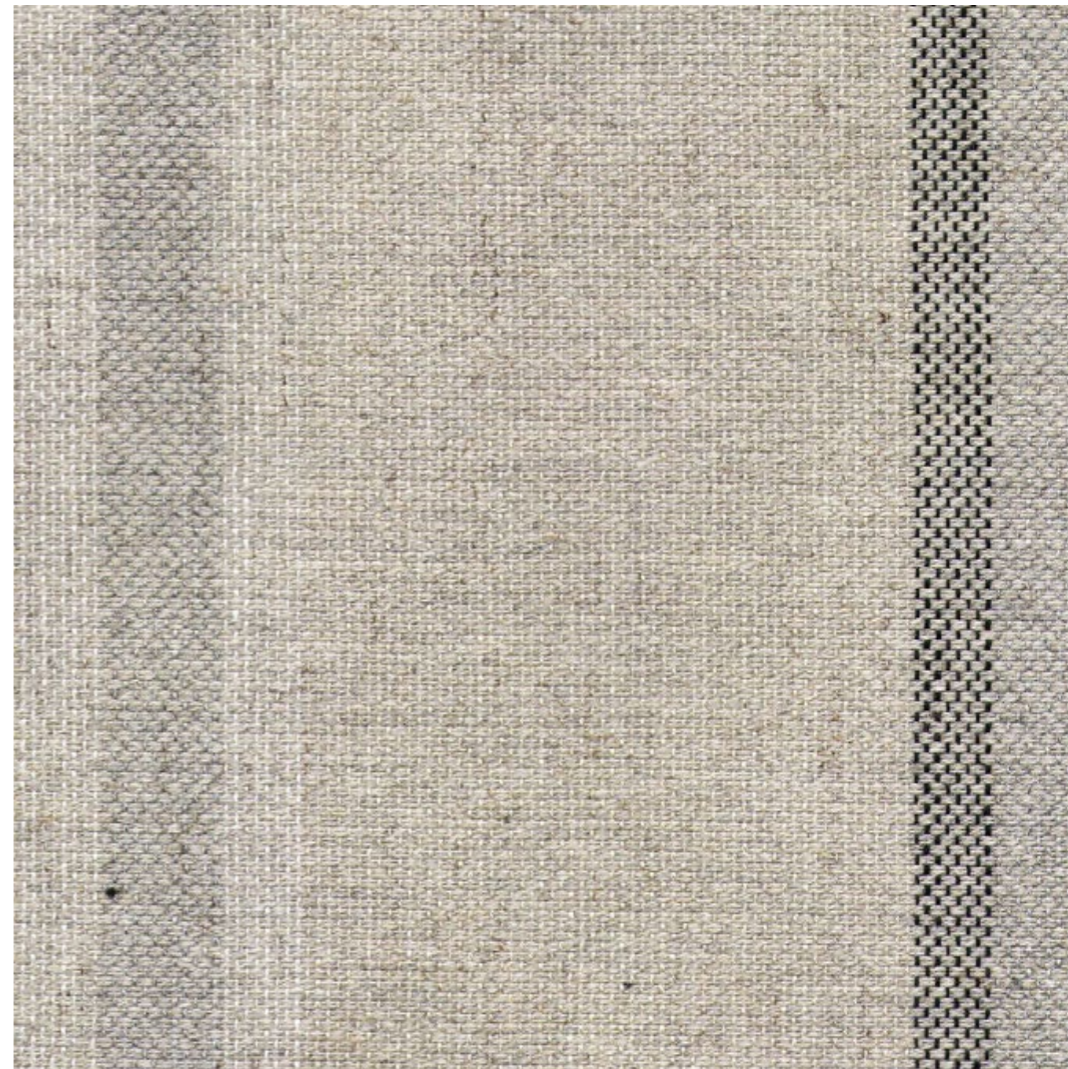


TEC 513 E  
49 % Algodao 51% Poliéster



TEC 529 E

42% Algodão 22% Linho 36% Poliéster

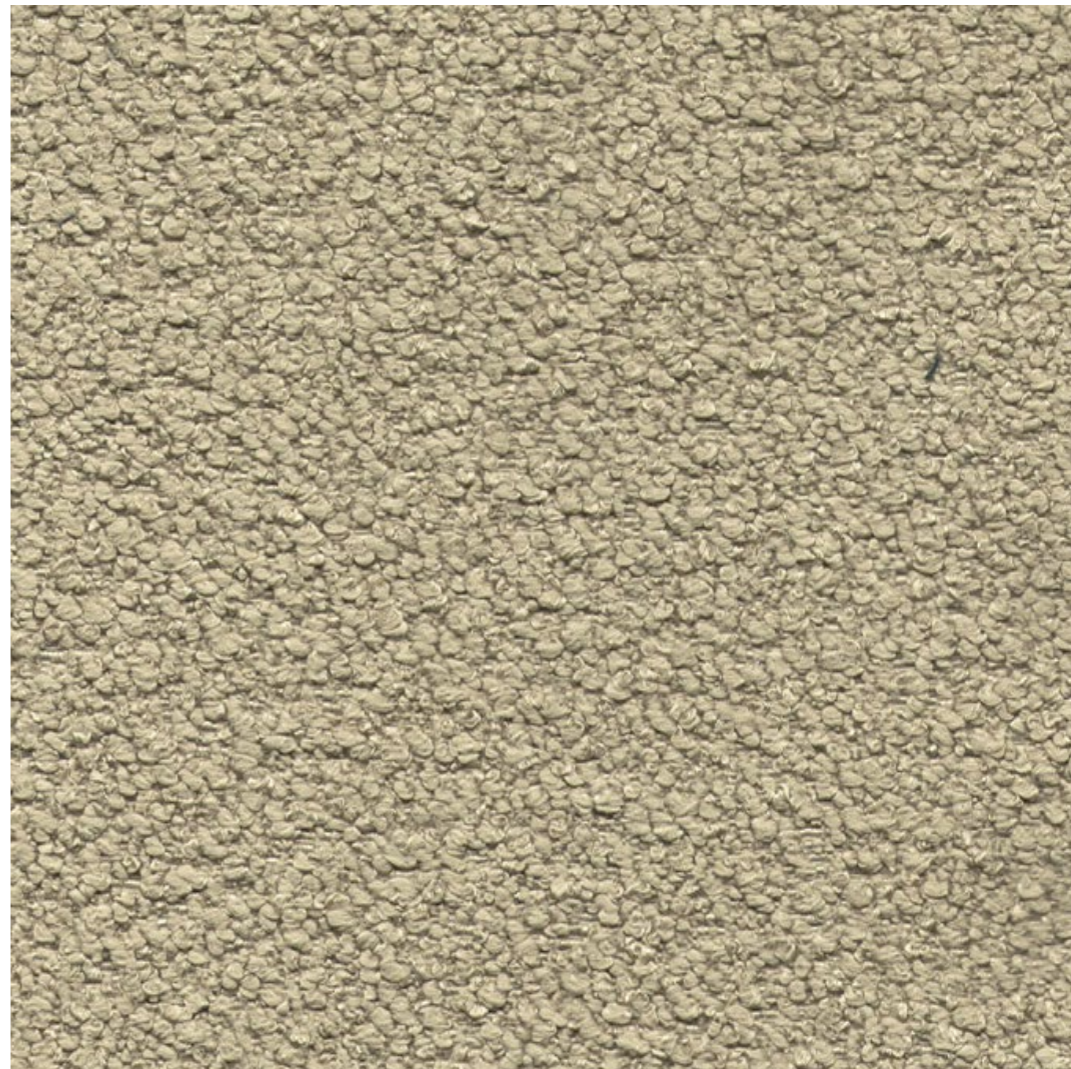


TEC 530 E

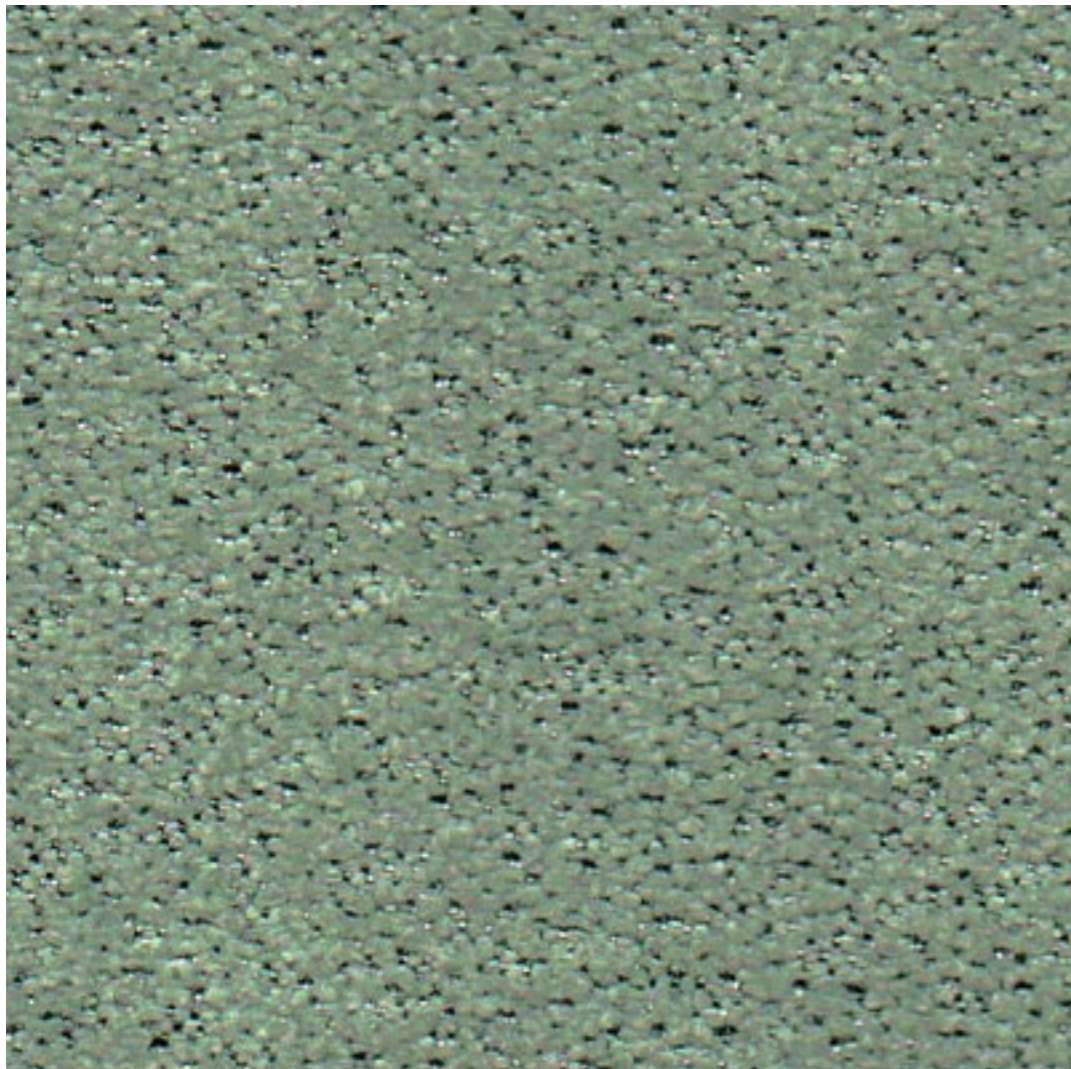
42% Algodão 22% Linho 36% Poliéster



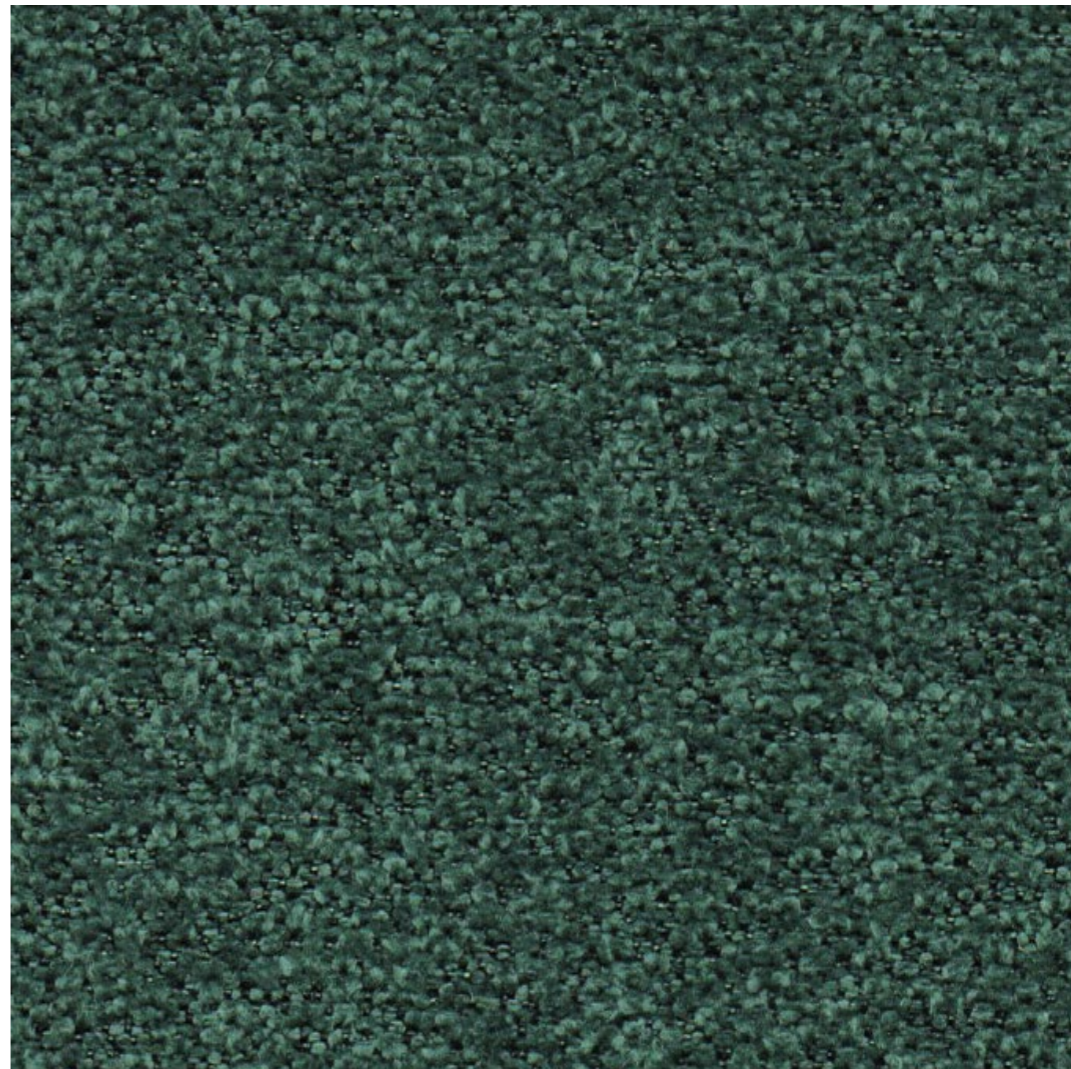
TEC 531 E  
100% Poliéster Bouclé



TEC 532 E  
100% Poliéster Bouclé



TEC 535 E  
100% Poliéster

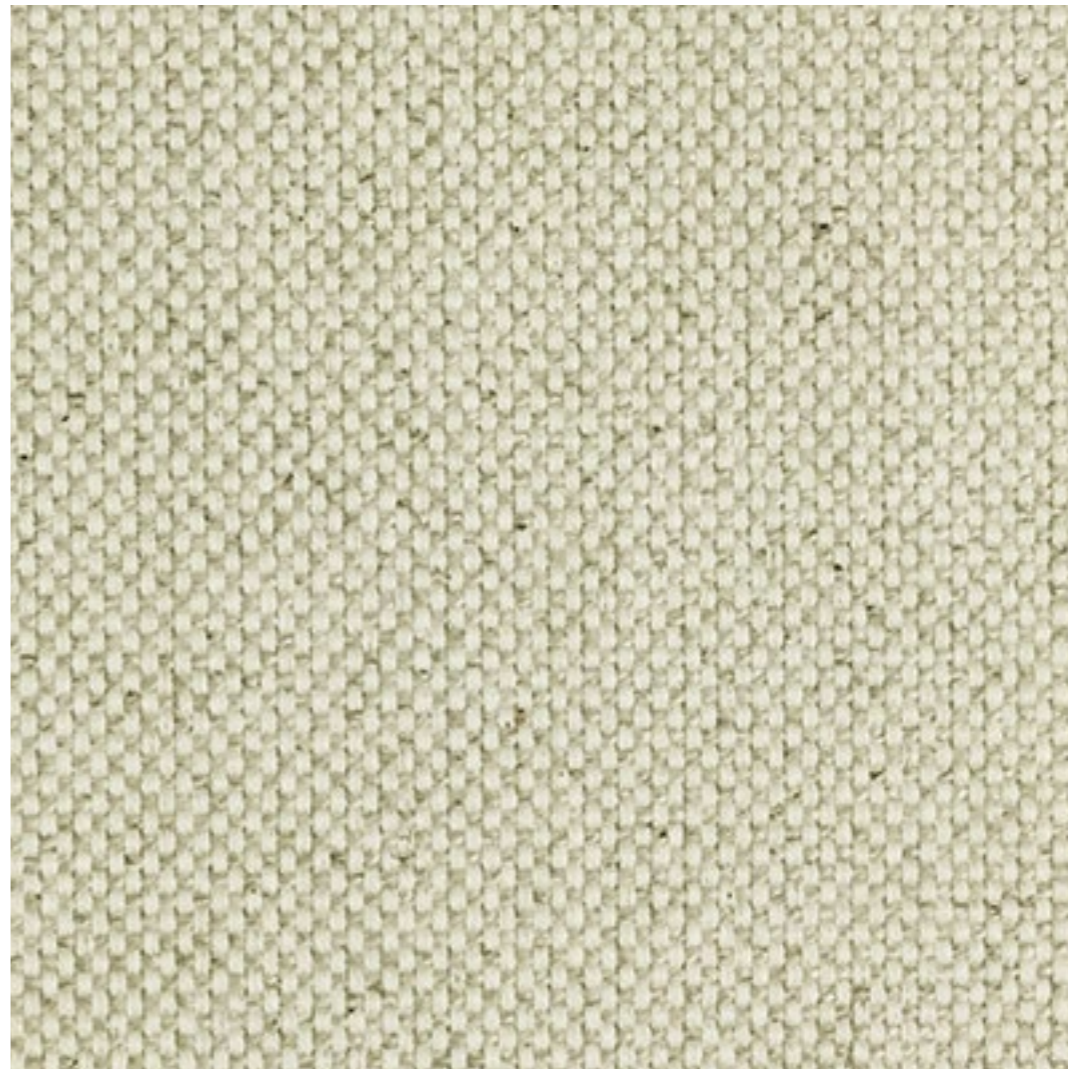


TEC 537 E  
100% Poliéster



TEC 538 E

45% Poliéster 55% POLICLORETO



TEC 193 F

44% Algodão 28% Linho 28% Viscose





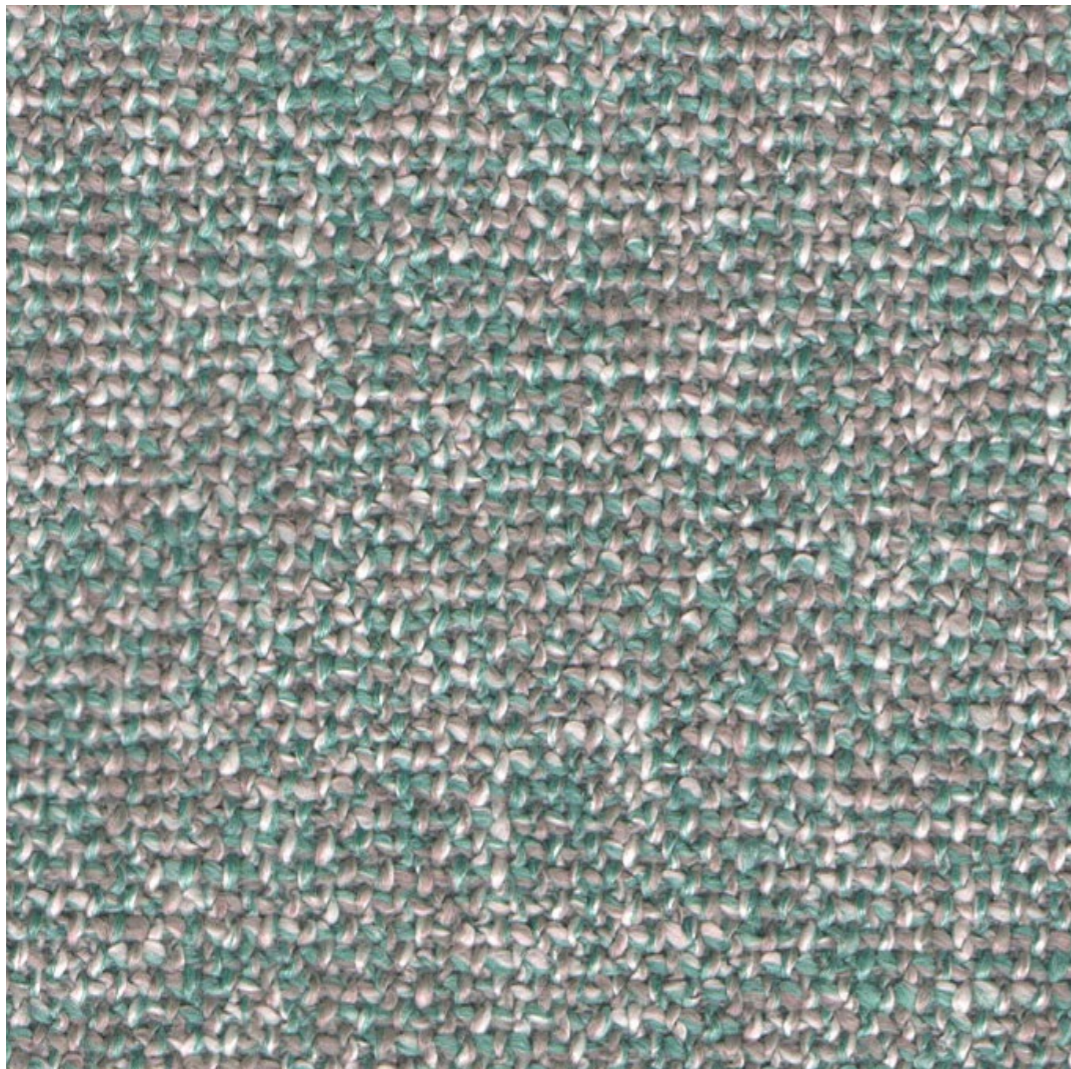
TEC 617 F

74% Algodão 26% Poliéster



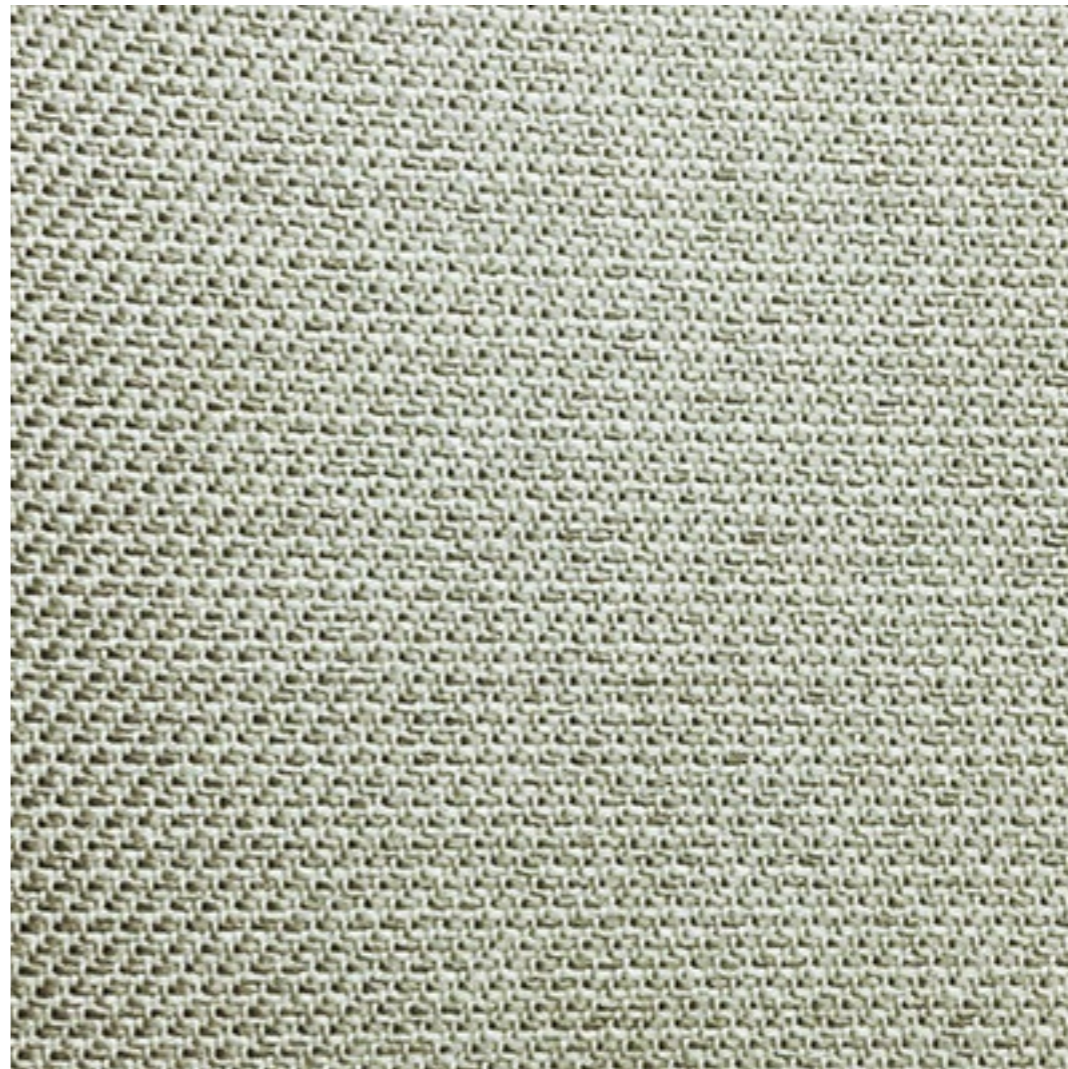
TEC 621 F

90% Poliéster ST. 10% Algodão



TEC 622 F

90% Poliéster ST. 10% Algodão



TEC 522 F

100% Poliéster Acquablock



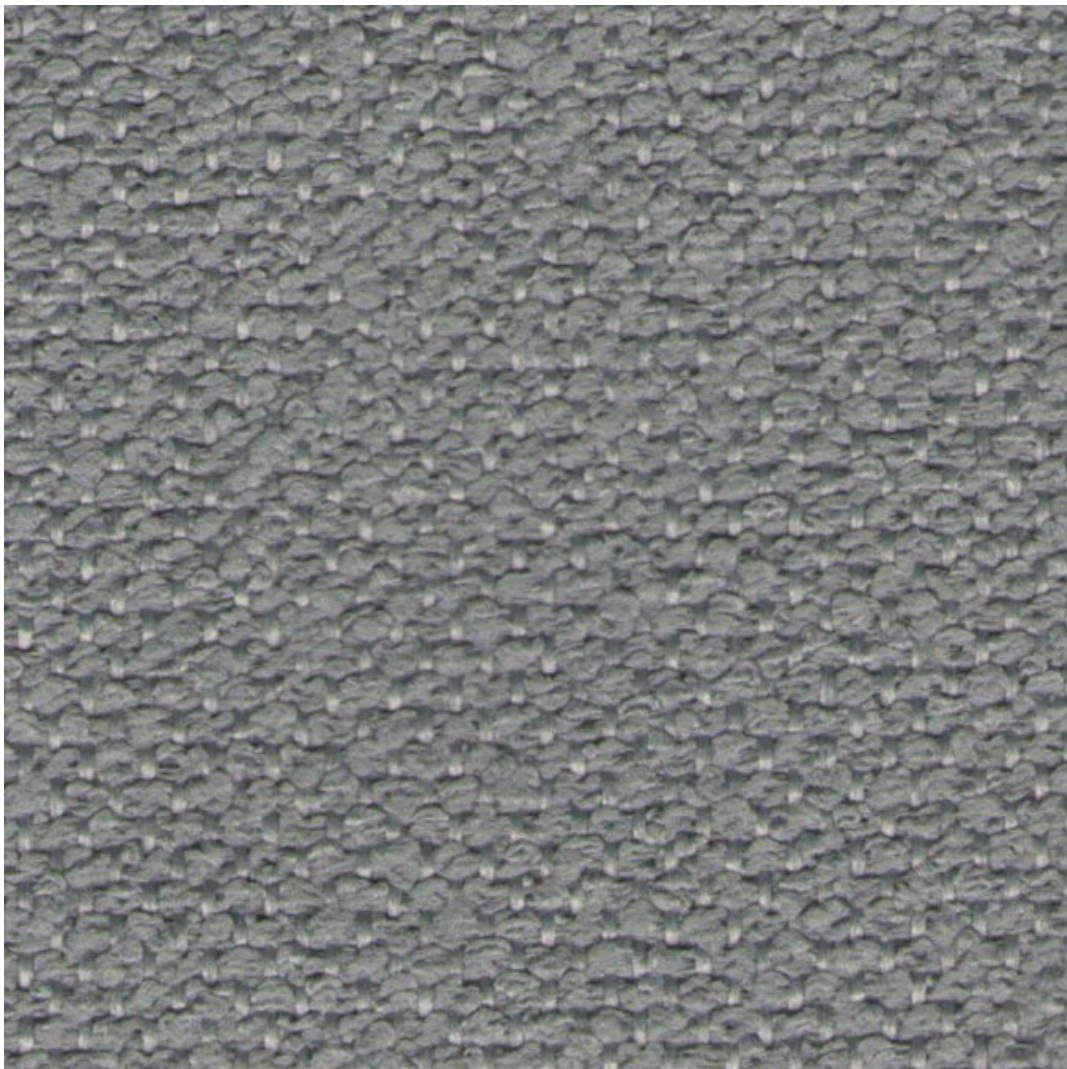
TEC 700 G

100% Poliéster Impermeável



TEC 701 G

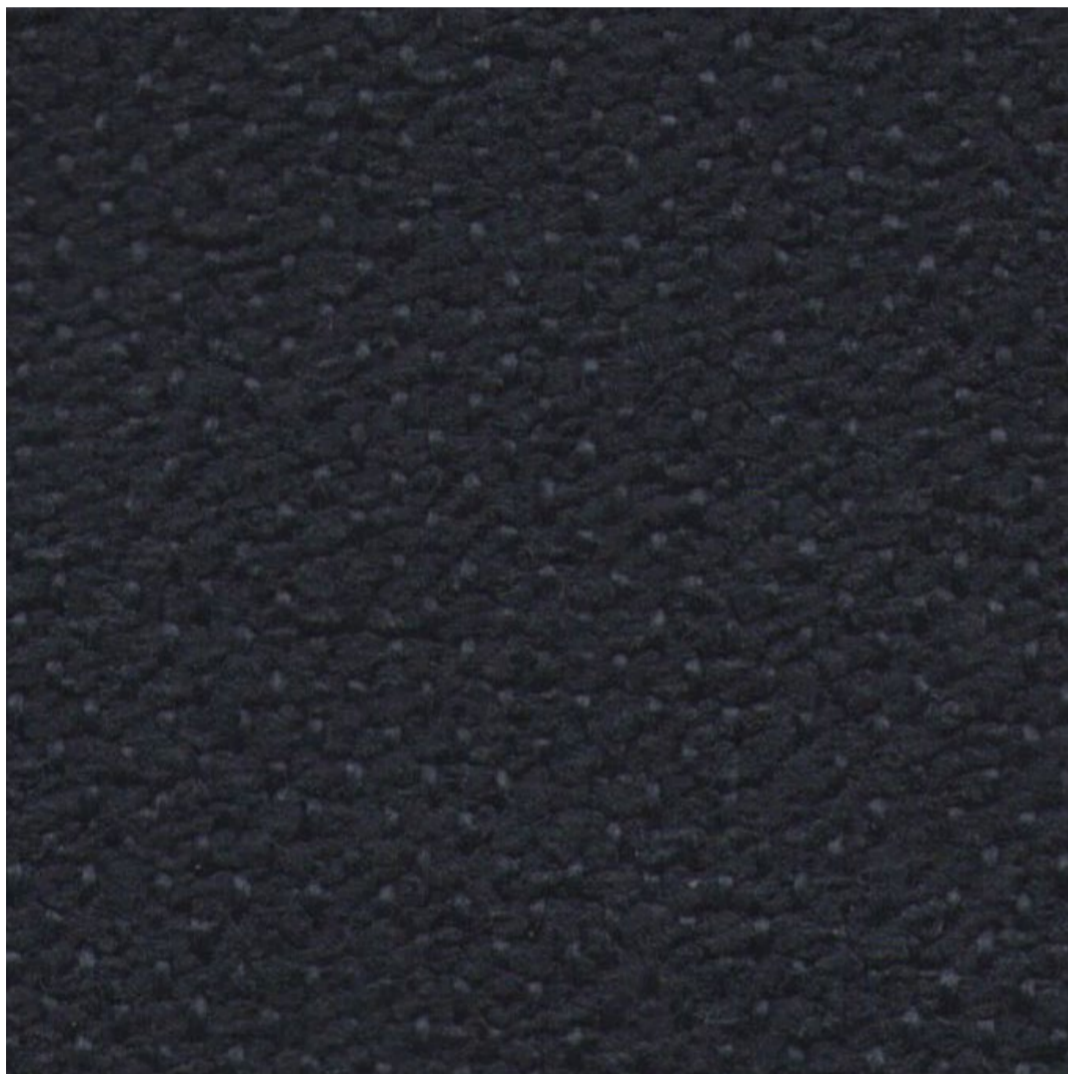
100% Poliéster Impermeável



TEC 702 G

100% Poliéster Impermeável

clique e visite nosso site:  
[ozki.com.br](http://ozki.com.br)



TEC 703 G  
100% Poliéster Impermeável

ozki

 [ozkimoveis](#)

 [ozkimoveis](#)

 54 98422-5205

Observação  
Imagens com cores aproximadas.  
Não refletem em 100% na totalidade do tecido físico.